



Residential Portfolio in WF1

Berners Street, Wakefield, West Yorkshire,
WF1 4DY

£140,000 Starting Bid

Property features

- ✓ 5 Double Bedrooms
- ✓ Two Kitchens
- ✓ Two Bathrooms
- ✓ Investment Property
- ✓ No Upper Chain

Description

For sale via secure sale online bidding - terms and conditions apply.

Great Investment Opportunity. A five bedroom well-cared for Terrace close to Wakefield City Centre, schools, hospitals and a good position for the commuter. The property could generate an approximate annual income of £16,000, making it ideal for landlords seeking strong rental returns in a popular location. Yield 10%.
Comprising: Ground Floor Entrance hallway, two double bedrooms, lower ground floor, dining kitchen, shower room, double bedroom, first floor, dining kitchen, bathroom, double bedroom, upper floor, double bedroom. Externally there is front and rear gardens. No Upper Chain. EPC - D.

Please note photos and video taken 4th November 2025.

Please note we have not inspected this property.

Price: Starting Bid £140,000

Property Type: Residential Portfolio

Business Type: Residential Investments

Parking: None

Location

Close to Wakefield City Centre, schools, hospitals and a good position for the commuter.

Accommodation

Comprising: Ground Floor Entrance hallway, two double bedrooms, lower ground floor, dining kitchen, shower room, double bedroom, first floor, dining kitchen, bathroom, double bedroom, upper floor, double bedroom. Externally there is front and rear gardens.

Tenure

Freehold, title number WYK456901

EPC

Available upon request - rating C

Additional Information

For further information please contact our office directly on 0191 737 1154, or alternatively via email on commercial@pattinson.co.uk. With regards to viewing subject property, this is to be done strictly by appointment.



My New Project

CREATED ON
2025-11-04

LOCATION
12 Berners Street
WF1 4DY Wakefield
West Yorkshire
GB

DETAILS
Total area: 122.54 m²
Living area: 122.54 m²

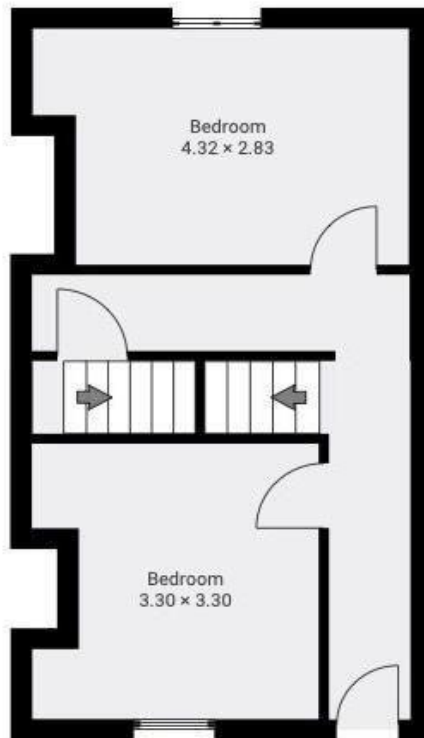
Northpoint360 Property Marketing

Info@northpoint360.co.uk
www.northpoint360.co.uk
0744 248 5428

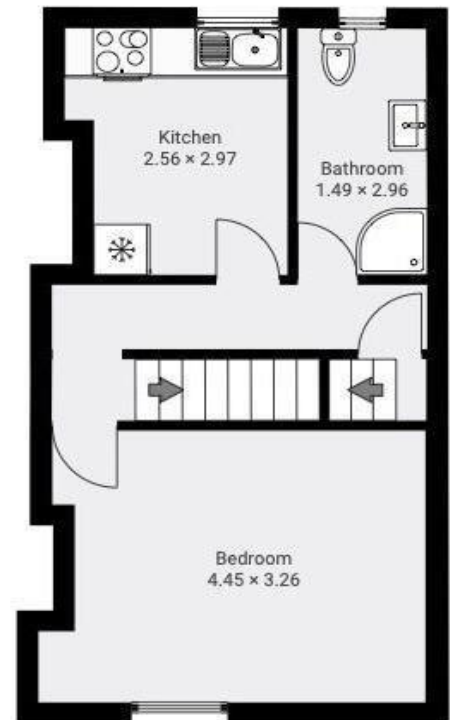
WHILST EVERY ATTEMPT HAS BEEN MADE TO ENSURE ACCURACY OF THE FLOORPLAN CONTAINED HERE, MEASUREMENTS OF DOORS, WINDOWS, ROOMS AND ANY OTHER ITEMS ARE APPROXIMATE AND NO RESPONSIBILITY IS TAKEN FOR ANY ERROR, OMISSION OR MIS-STATEMENT. PRODUCED BY NORTHPOINT360 PROPERTY MARKETING.

0.0 0.5 1.0 1.5 2.0m
1:56

▼ Ground Floor TOTAL AREA: 32.29 m² · LIVING AREA: 32.29 m² ·



▼ 1st Floor TOTAL AREA: 31.45 m² · LIVING AREA: 31.45 m² ·



Berners Street, Wakefield, West Yorkshire, WF1 4DY

Contact your local branch today for more information on this property:

11 Millington Road, Hayes, Middlesex, UB3 4AZ, Tel: 0800 500 3196, www.adanestates.co.uk

These particulars, whilst believed to be accurate are set out as a general outline only for guidance and do not constitute any part of an offer or contract. Intending purchasers should not rely on them as statements of representation of fact, but must satisfy themselves by inspection or otherwise as to their accuracy. No person in this firm's employment has the authority to make or give any representation or warranty in respect of the property.

