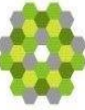


HM Land Registry
Official copy of
title plan

Title number **SY665329**
Ordnance Survey map reference **TQ3546SE**
Scale **1:1250 enlarged from 1:2500**
Administrative area **Surrey : Tandridge**



©Crown Copyright. Produced by HM Land Registry. Reproduction in whole or in part is prohibited without the prior written permission of Ordnance Survey. Licence Number 100026316.



Land & Development in RH7

Eastbourne Road, Blindley Heath,
Lingfield, Surrey, RH7 6JX

£10,000 Starting Bid

Tenure

Freehold

Property features

- ✓ For Sale By Online Auction - Terms & Conditions apply
- ✓ Land site for sale
- ✓ Planning gain opportunity
- ✓ Ideal self-build potential
- ✓ Hands free investment prospect

Description

FOR SALE VIA ONLINE AUCTION: Terms and conditions apply.

We are pleased to offer to auction Plot 59a Eastbourne Road, approximate sizing of 55 sqm (592 sqft), superbly located just south of the M25 London Orbital Motorway and East of the M23 Motorway. The site is located at a junction with the Main A22 Eastbourne Road and Byers Lane.

The property is subject to an overage provision and obligations in relation to development of the land

The buyer must be satisfied that it has read and understood the provisions in relation to this overage and buys subject to them.

Please note we have not inspected this property.

Price: Starting Bid £10,000

Property Type: Land & Development

Business Type: Residential Investments

Internal Size: 592 Square Feet

External Size: 592 Square Feet

Parking: None

Location

The site is in a superb location just south of the M25 London Orbital Motorway and East of the M23 Motorway. The site is located at a junction with the Main A22 Eastbourne Road and Byers Lane. Nearest postcode: RH7 6JX

Site Details

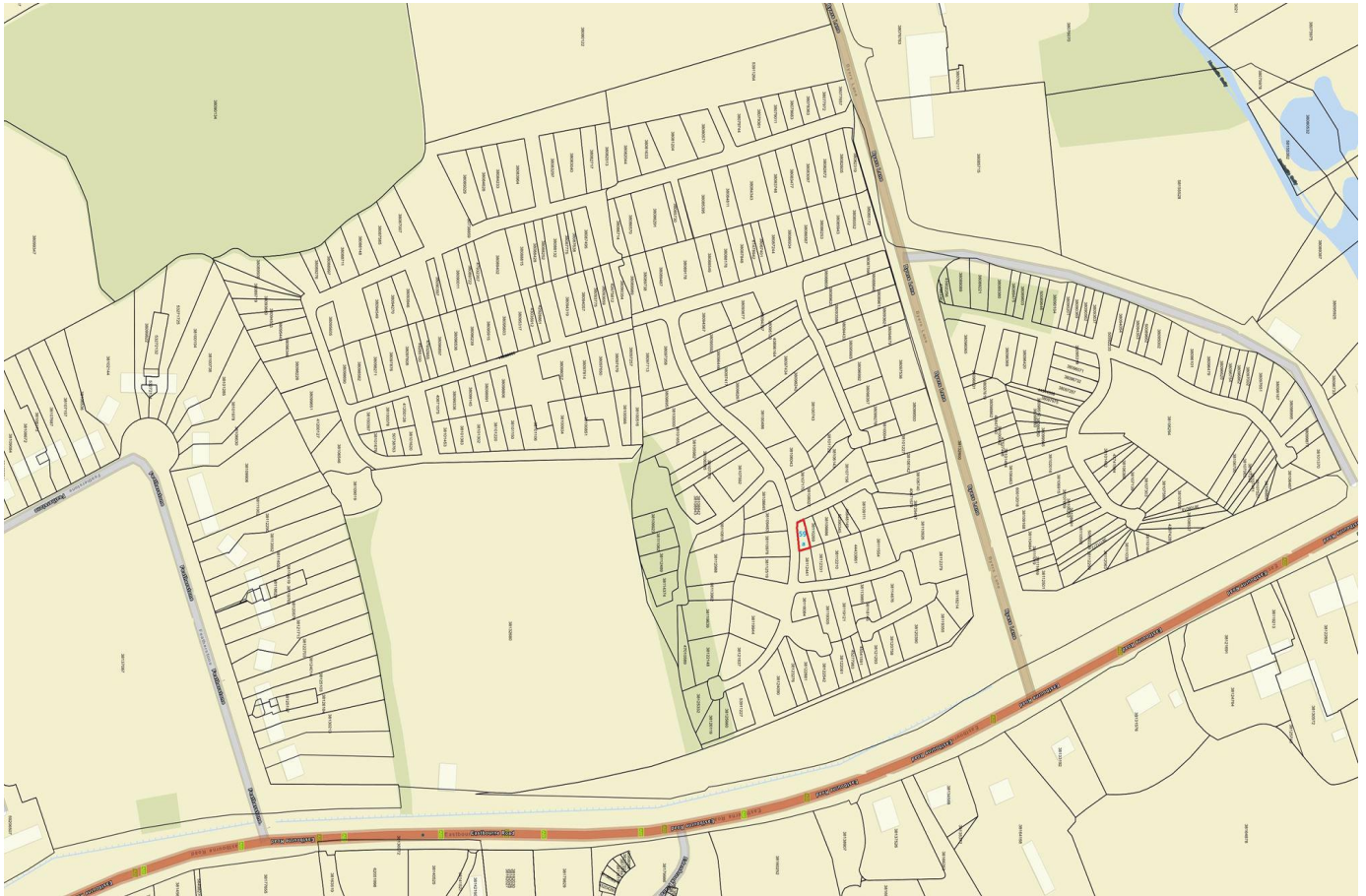
PLOT 59a approximate size 55 sqm (592 sqft)

Tenure

Freehold. Title number SY770330

Additional Information

For further information please contact our office direct on 0191 737 1154, or alternatively via e-mail on commercial@pattinson.co.uk. With regards to viewing the subject property, this is to be done strictly by appointment through Keith Pattinson Commercial department. Please contact us to arrange an internal inspection, or to register your interest.



Eastbourne Road, Blindley Heath, Lingfield, Surrey, RH7 6JX

Contact your local branch today for more information on this property:

11 Millington Road, Hayes, Middlesex, UB3 4AZ, Tel: 0800 500 3196, www.adanestates.co.uk

These particulars, whilst believed to be accurate are set out as a general outline only for guidance and do not constitute any part of an offer or contract. Intending purchasers should not rely on them as statements of representation of fact, but must satisfy themselves by inspection or otherwise as to their accuracy. No person in this firm's employment has the authority to make or give any representation or warranty in respect of the property.

